

PRATHAMESH RAVINDRANATH KUDTARKAR
+ STAR RESTAURANT

Sir. J J College of Arch

4 Star Restaurant

The fascination to watch the night sky from the bed after a tiresome day was the starting point in designing this restaurant which had guest rooms on top.

Doing so in a tower could only be possible if the building tilted to some degree to make way for the view. Technically it was possible with a shear

wall construction and an L footing to balance the centre of gravity. The layout of rooms led to a comfortable placement of shear walls.

With the technical problems solved and with the help of project brief provided by the college a rough positions of areas was assumed.

After lots of refinements a form was finalized on and the plan followed later.

The plan was worked on to provide proper

segregation of areas and traffic. A 4 Star Restaurant is frequently visited by elite who are potential buyers of artwork and hence a restaurant can be a good launching space for budding artists. With this thought in view an Exhibition space was proposed as an addition to the brief provided.

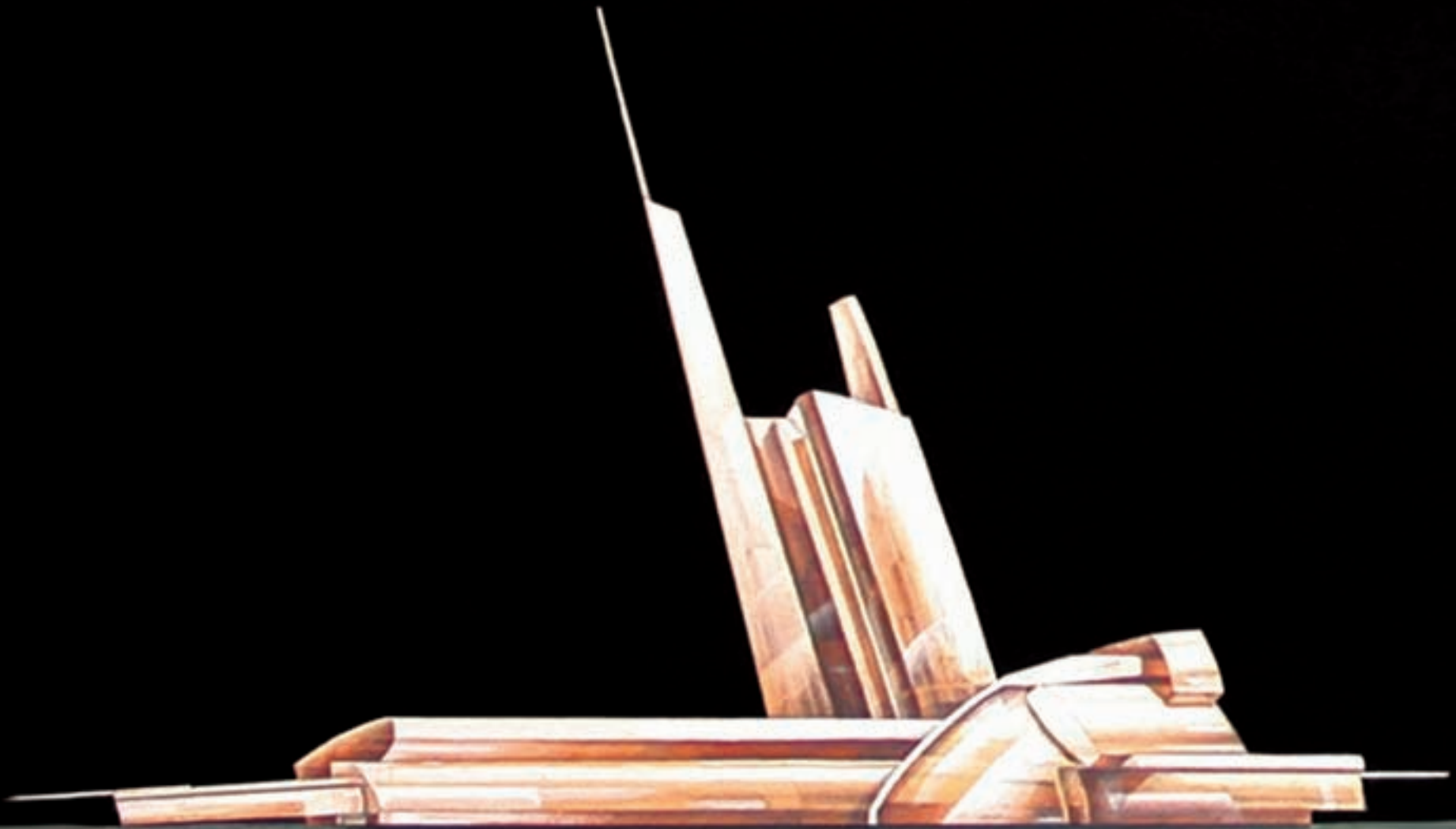
Curtain wall glazing in its raw form is not the wisest solution in India. Hence modifications were made in order to cut the solar

gain from the glazing. In this project double glazing has been used in modular form with micro louvers sandwiched in between. Water is made to flow in the gap which absorbs the heat from the glazing as glass designed to restrict solar gain are known to get really hot. The flow of water acts as a motor which moves the micro louvers and by maneuvering the water flow the louvers can be opened or closed. Since the louvers are micro they won't be visible to eyes in

an open state but will act as curtain once closed.

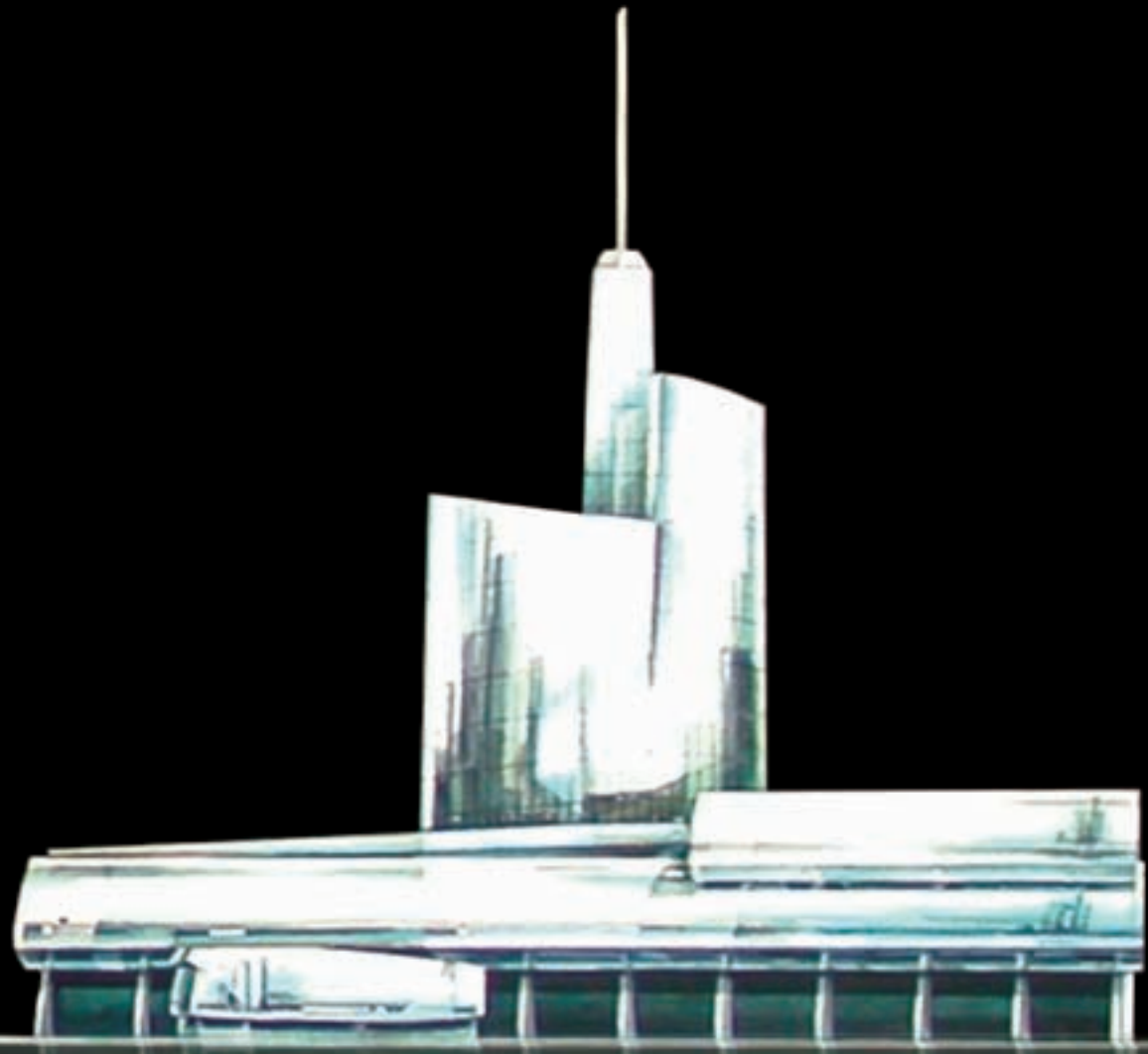
The restaurant has been solely designed with visual quality in mind and revolves around exiting spaces to give you an experience of Life.

N O R T H E L E V A T I O N



Prathamesh Ravindranath Kudtarkar Fourth Year
4 Star Restaurant

W E S T E L E V A T I O N



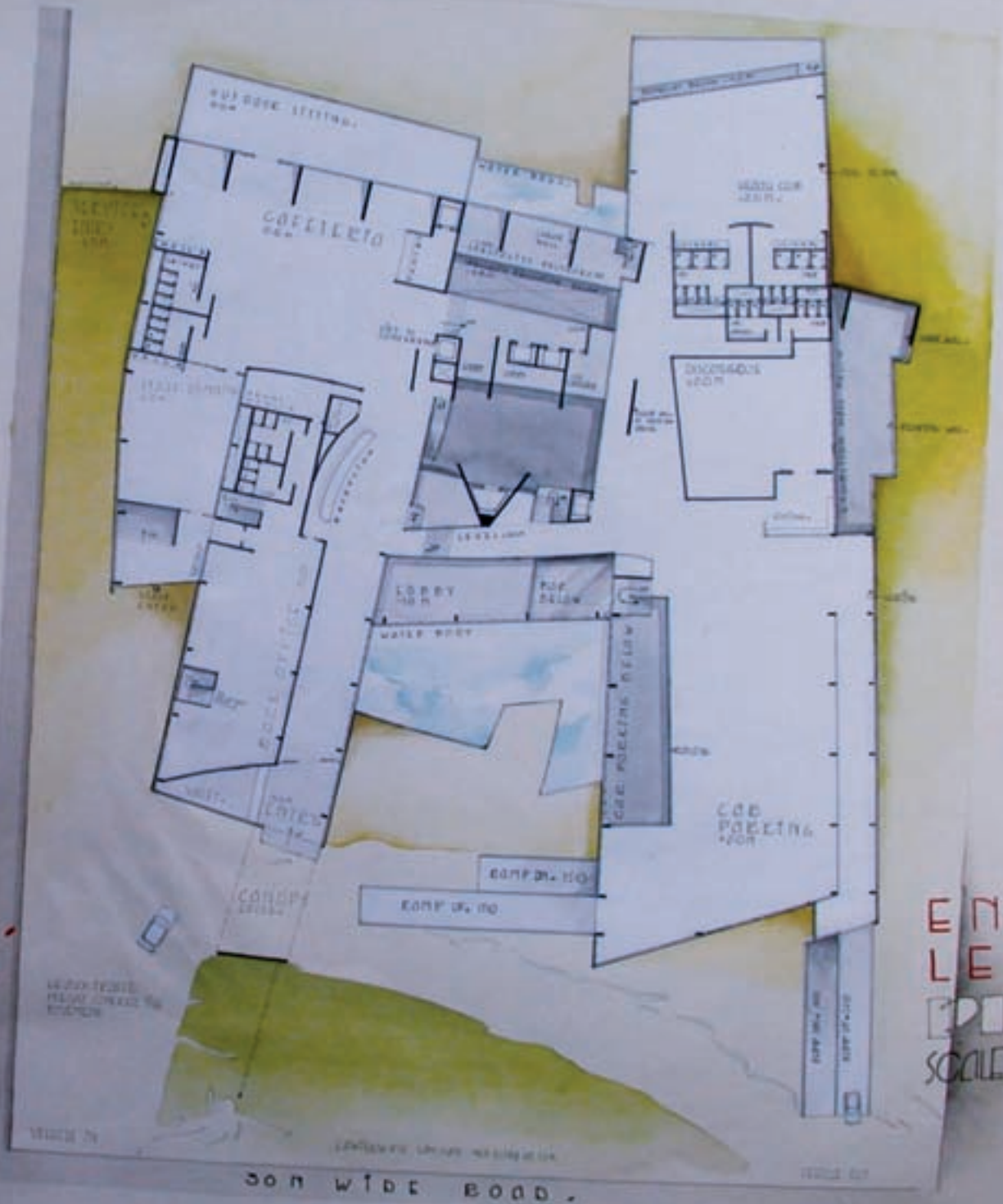
Prathamesh Ravindranath Kudtarkar Fourth Year
4 Star Restaurant

LEGEND

- ENTRY
- RECEPTION
- LOBBY
- BACK OFFICE
- CAFFETERIA
- DISCOTHEQUE
- HEALTH CLUB
- CAR PARKING
- VALET

FOUR STAR HOTEL.

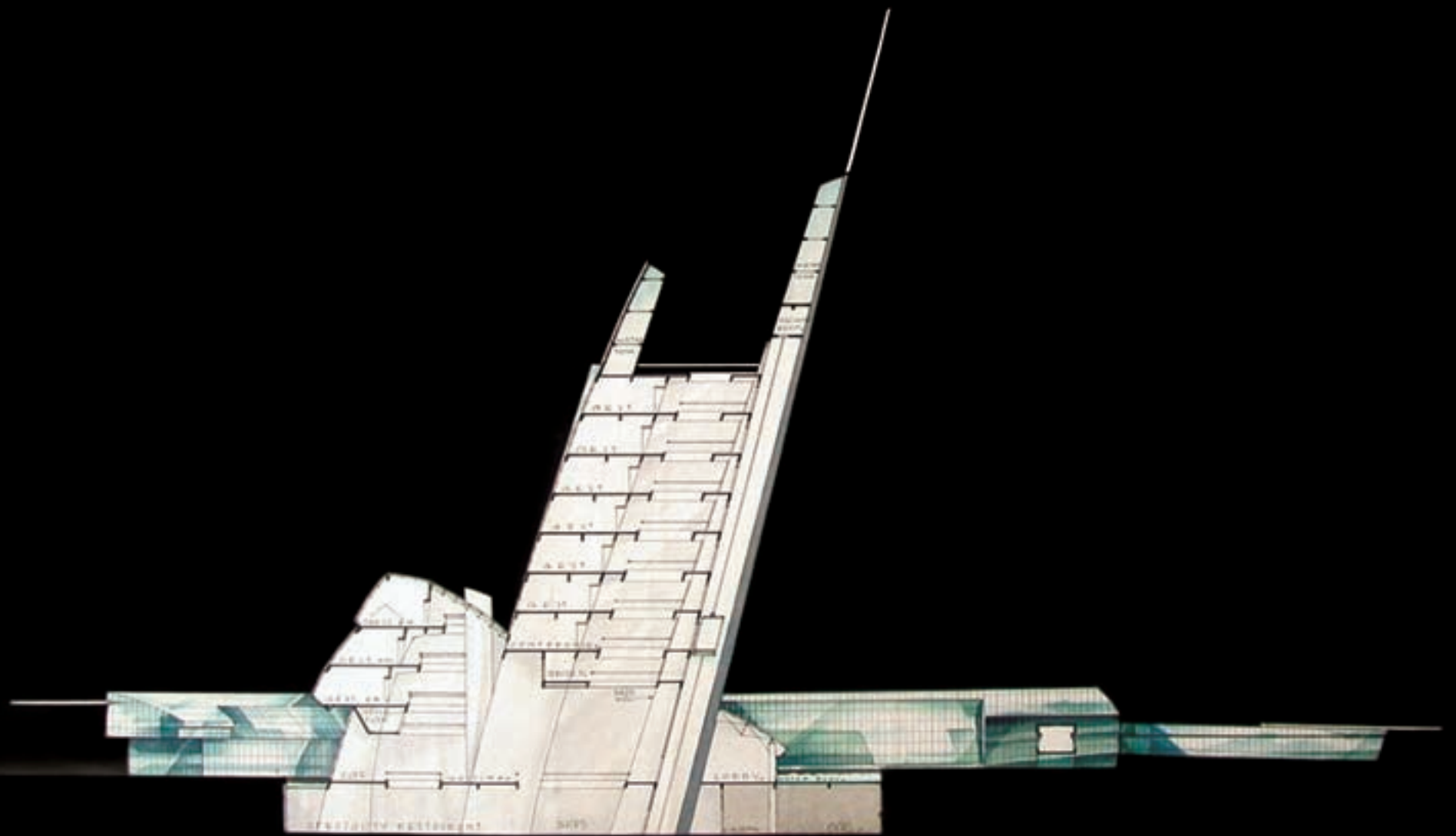
PELIKANIAN RAUTERANIN KUIKOKKE,
SR. JJ COLLEGE OF ARCHITECTURE.



ENTRY
LEVEL
PLAN.
SCALE 1:200



30m WIDE ROAD.



SECTION - aa'

Prathamesh Ravindranath Kudtarkar Fourth Year
4 Star Restaurant